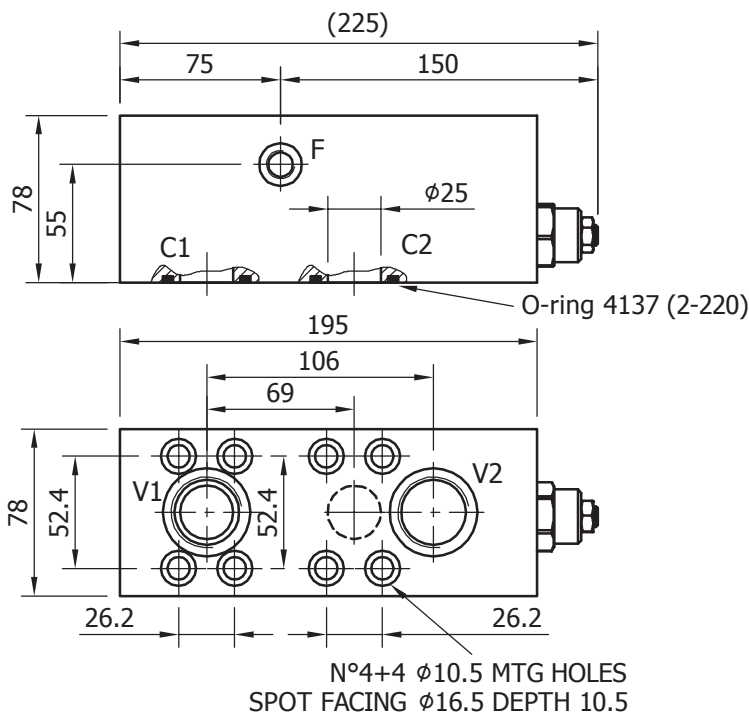
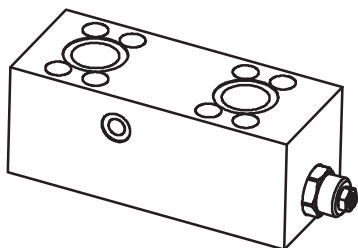


SINGLE OVERCENTER - OVSA 160



PORTS DIMENSION

V1, V2 1" BSP

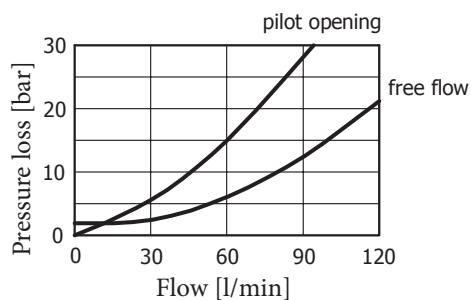
F 1/4" BSP

C1, C2 O-Ring 4137
Parker code 2-220

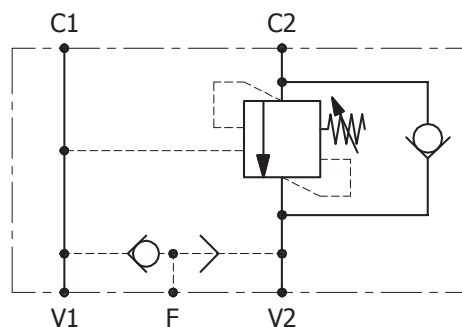
TECHNICAL DATA

		OVSA.160.1.D47	OVSA.160.2.D47	OVSA.160.3.D47
NOMINAL FLOW	[l/min]	120	120	120
MAXIMUM FLOW	[l/min]	160	160	160
MAXIMUM PRESSURE	[bar]	350	350	350
PILOT RATIO	[]	1 (3:1)	2 (4.5:1)	3 (10:1)
RELIEF VALVE SETTING RANGE	[bar]	70-280	140-350	140-350
STANDARD RELIEF SETTING	[bar]	210	210	210
BLOCK MATERIAL	[]	steel	steel	steel
DISTRIBUTOR FITTING	[]	D47	D47	D47

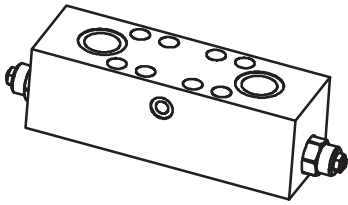
Cartridge characteristic



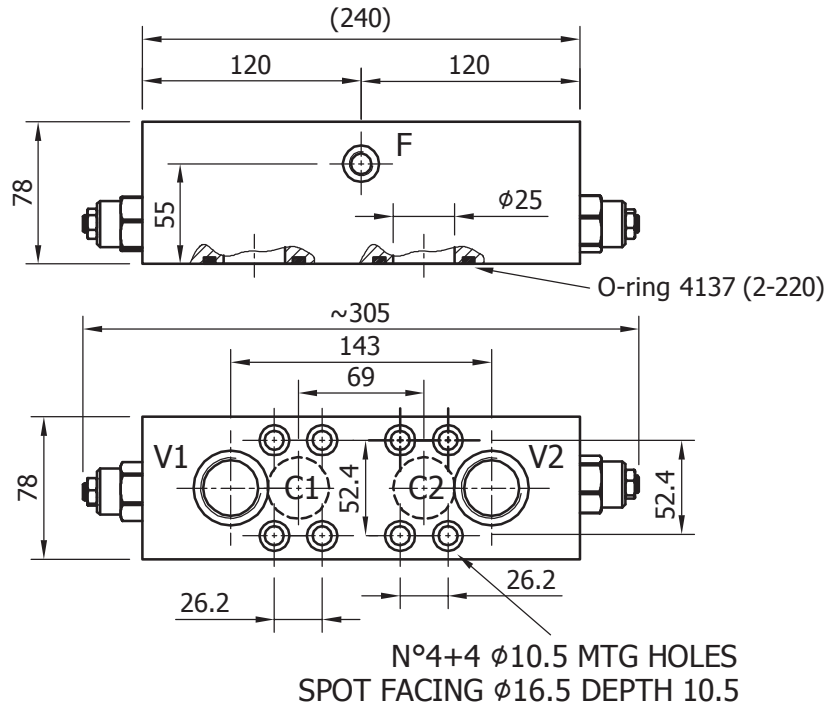
Hydraulic circuit



DOUBLE OVERCENTER - OVDA 160

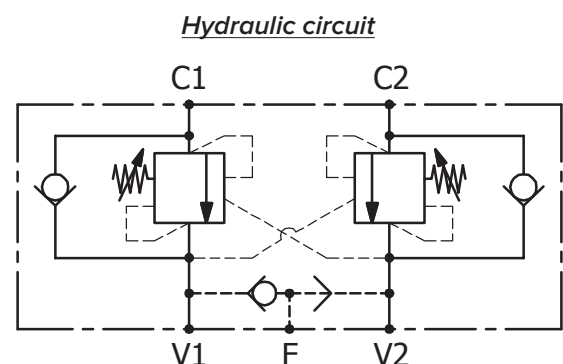
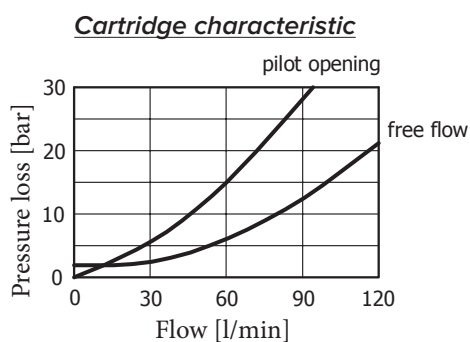


PORTS DIMENSION	
V1, V2	1" BSP
F	1/4" BSP
C1, C2	O-Ring 4137 Parker code 2-220

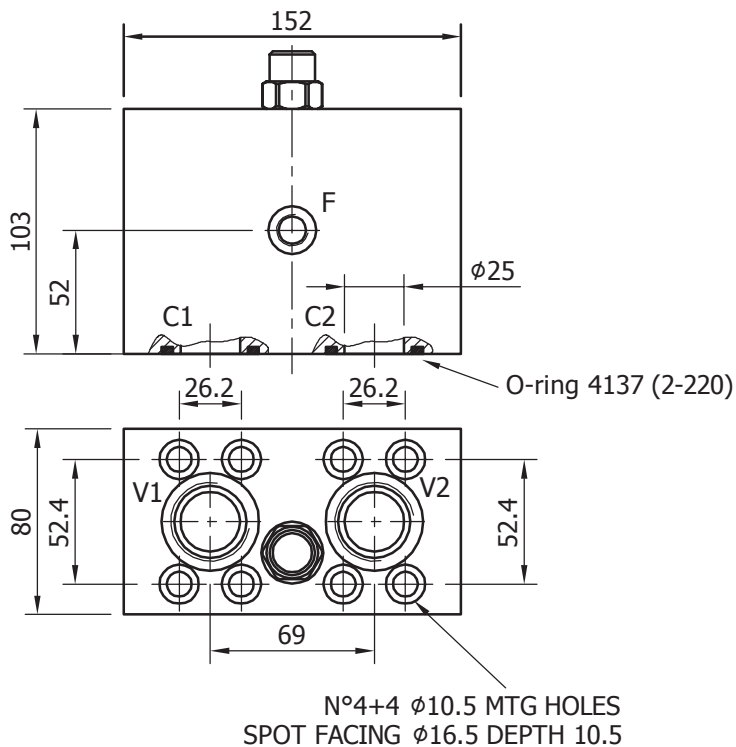
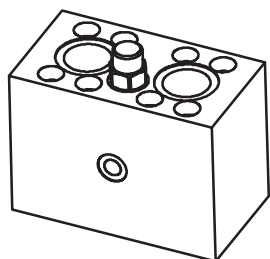


TECHNICAL DATA

		OVDA.160.1.D47	OVDA.160.2.D47	OVDA.160.3.D47
NOMINAL FLOW	[l/min]	120	120	120
MAXIMUM FLOW	[l/min]	160	160	160
MAXIMUM PRESSURE	[bar]	350	350	350
PILOT RATIO	[]	1 (3:1)	2 (4.5:1)	3 (10:1)
RELIEF VALVE SETTING RANGE	[bar]	70-280	40-350	140-350
STANDARD RELIEF SETTING	[bar]	210	210	210
BLOCK MATERIAL	[]	steel	steel	steel
DISTRIBUTOR FITTING	[]	D47	D47	D47



FLUSHING - AP 40



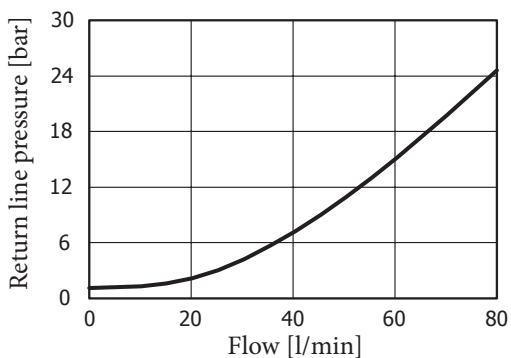
PORTS DIMENSION

V1, V2	1" BSP
F	1/4" BSP
C1, C2	O-Ring 4137 Parker code 2-220

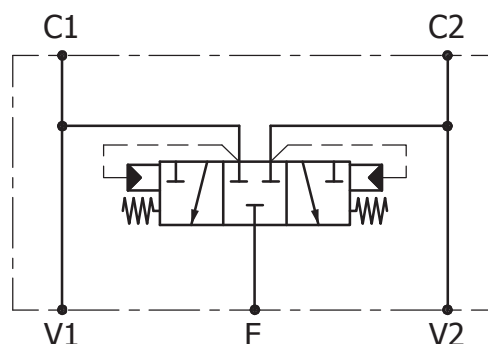
TECHNICAL DATA

		AP40.D47
MAXIMUM FLUSHING FLOW	[l/min]	80
MAXIMUM PRESSURE	[bar]	350
BLOCK MATERIAL	□	steel
DISTRIBUTOR FITTING	□	D47

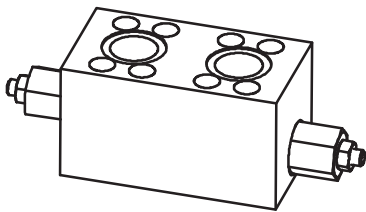
Cartridge characteristic



Hydraulic circuit

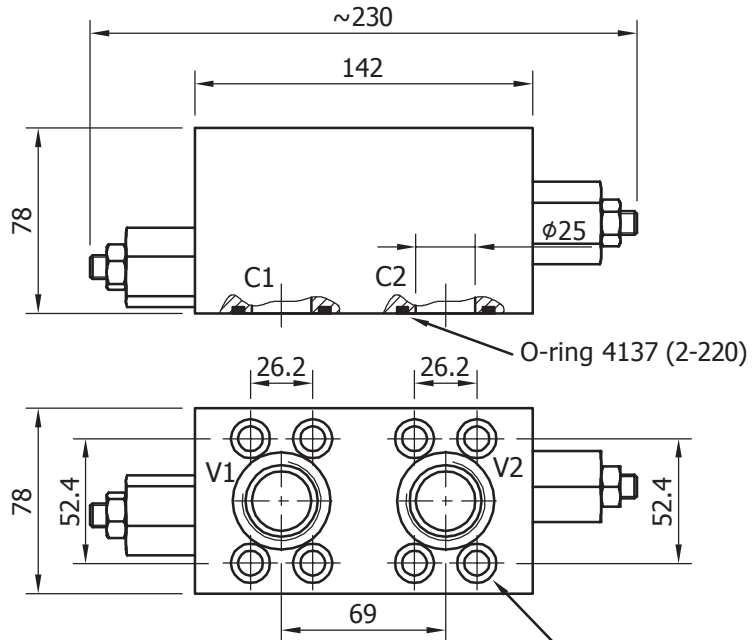


DOUBLE RELIEF - RVDA 80



PORTS DIMENSION

V1, V2	1" BSP
C1, C2	O-Ring 4137 Parker code 2-220



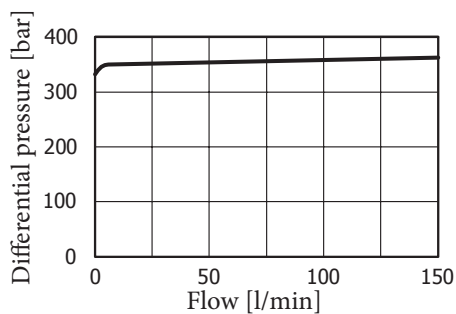
N°4+4 φ10.5 MTG HOLES
SPOT FACING φ16.5 DEPTH 10.5

TECHNICAL DATA

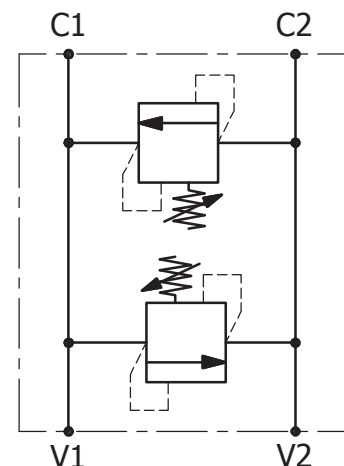
RVDA.80.C.D47

NOMINAL FLOW	[l/min]	150
MAXIMUM FLOW	[l/min]	200
MAXIMUM PRESSURE	[bar]	350
RELIEF VALVE SETTING RANGE	[bar]	C (20-350)
STANDARD RELIEF SETTING	[bar]	20
BLOCK MATERIAL	[]	steel
DISTRIBUTOR FITTING	[]	D47

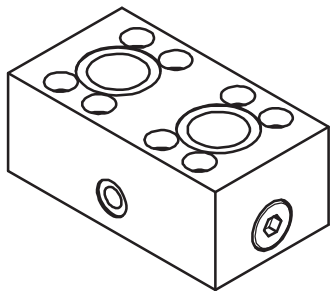
Cartridge typical pressure rise



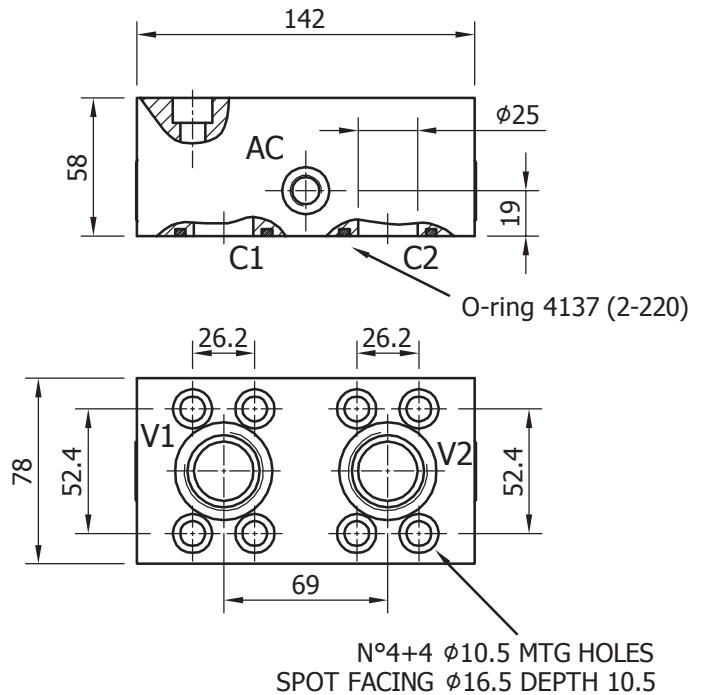
Hydraulic circuit



ANTICAVITATION - AC 80



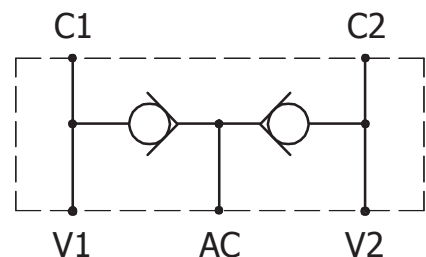
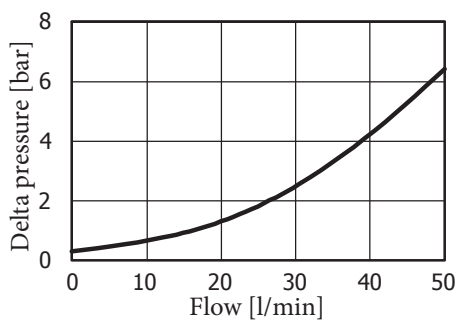
PORTS DIMENSION	
V1, V2	1" BSP
AC	1/4" BSP
C1, C2	O-Ring 4137 Parker code 2-220



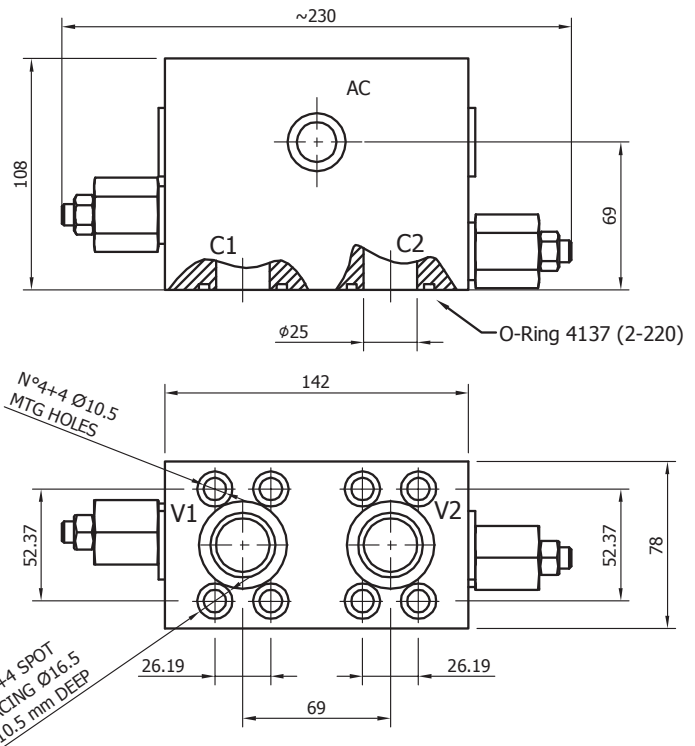
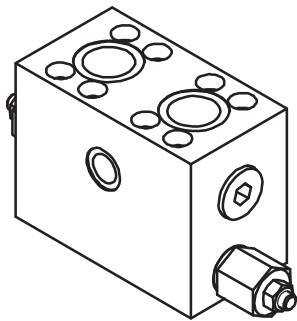
TECHNICAL DATA

		AC80.D47
NOMINAL FLOW	[l/min]	150
MAXIMUM FLOW	[l/min]	200
MAXIMUM PRESSURE	[bar]	350
MAXIMUM ANTICAVITATION FLOW (FROM AC TO C1 OR C2)	[l/min]	50
BLOCK MATERIAL	□	steel
DISTRIBUTOR FITTING	□	D47

Check valve flow/pressure curve



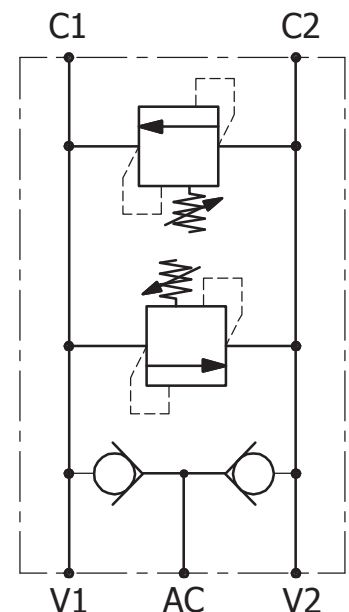
RELIEF & ANTICAVITATION - RVDAC80



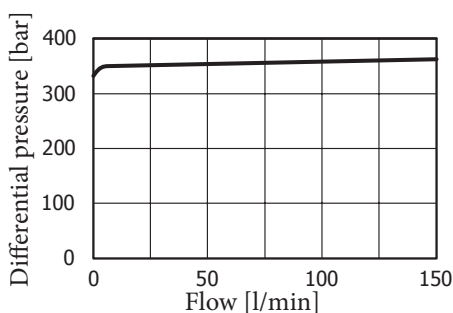
PORTS DIMENSION	
V1, V2	1" BSP
AC	1/4" BSP
C1, C2	O-Ring 4137 Parker code 2-220

TECHNICAL DATA

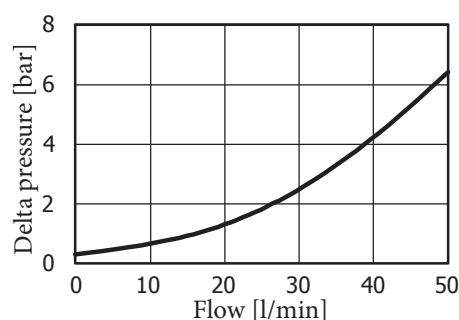
RVDAC80.C.D47		
NOMINAL FLOW	[l/min]	150
MAXIMUM FLOW	[l/min]	200
MAXIMUM PRESSURE	[bar]	350
RELIEF VALVE SETTING RANGE	[bar]	C (20-350)
STANDARD RELIEF SETTING	[bar]	20
MAXIMUM ANTICAVITATION FLOW (FROM AC TO C1 OR C2)	[l/min]	50
BLOCK MATERIAL	□	steel
DISTRIBUTOR FITTING	□	D47



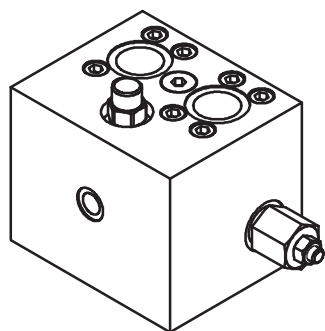
Relief cartridge typical pressure rise



Check valve flow/pressure curve

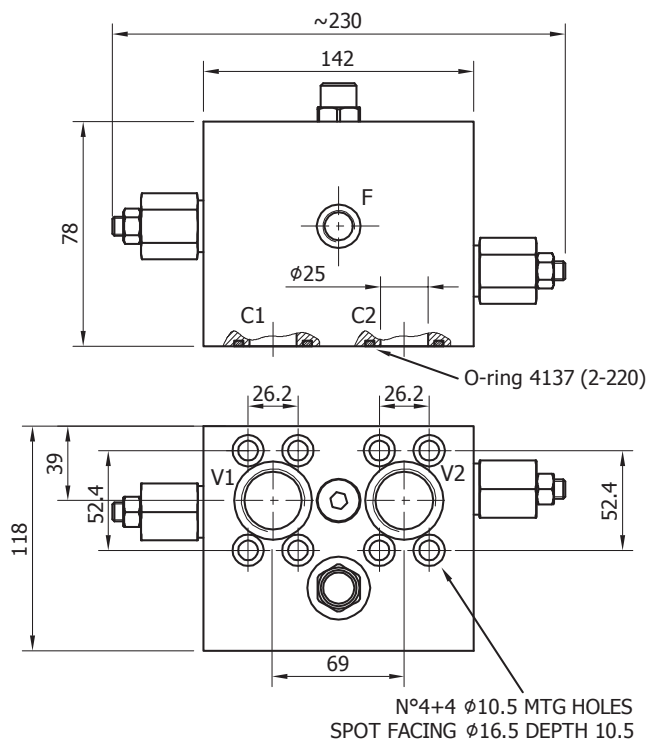


RELIEF & FLUSHING - RVDAP80



PORTS DIMENSION

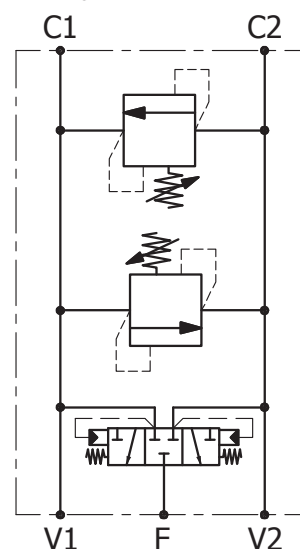
V1, V2	1" BSP
F	1/4" BSP
C1, C2	O-Ring 4137 Parker code 2-220



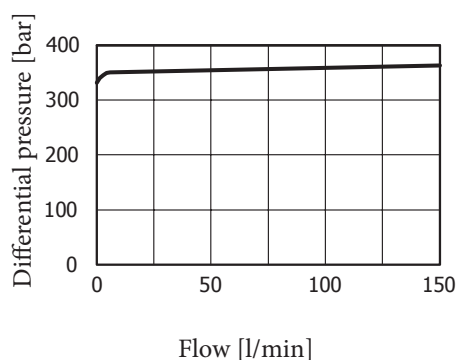
TECHNICAL DATA

		RVDAP80.C.D47
RELIEF VALVE MAXIMUM FLOW	[l/min]	200
RELIEF VALVE SETTING RANGE	[bar]	C (20-350)
STANDARD RELIEF SETTING	[bar]	70
MAXIMUM FLUSHING FLOW	[l/min]	80
MAXIMUM PRESSURE	[bar]	350
BLOCK MATERIAL	□	steel
DISTRIBUTOR FITTING	□	D47

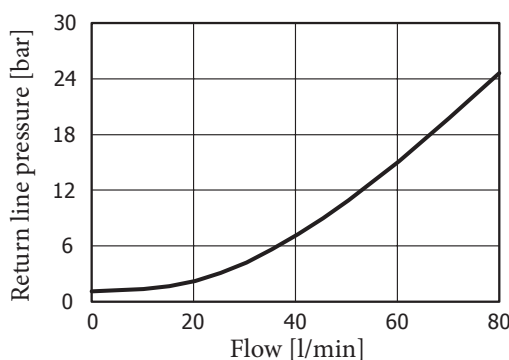
Hydraulic circuit



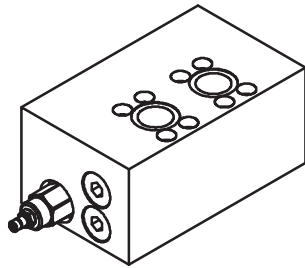
Relief cartridge typical pressure rise



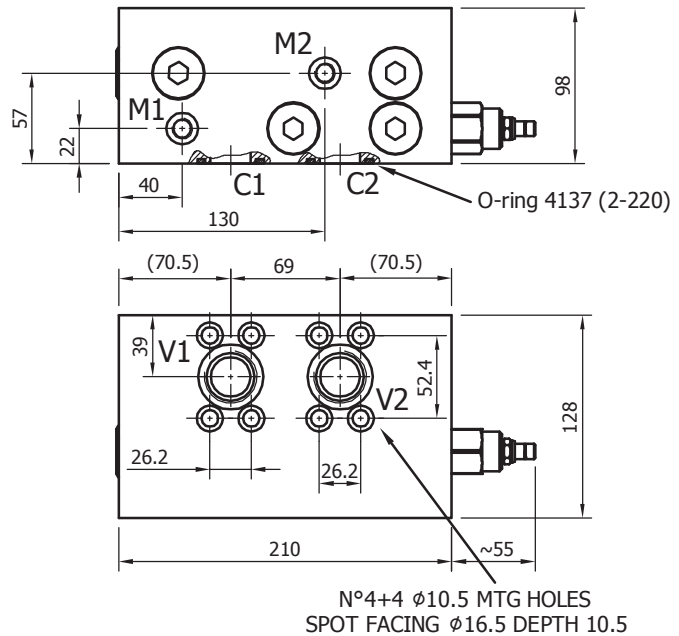
Flushing valve characteristic



RELIEF & ANTICAVITATION - RVSAC200



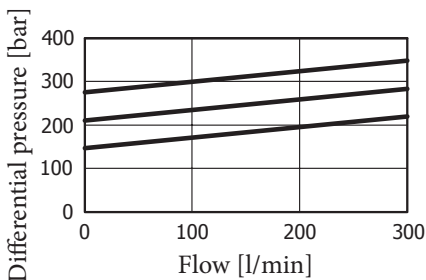
PORTS DIMENSION	
V1, V2	1" BSP
M1, M2	1/4" BSP
C1, C2	O-Ring 4137 Parker code 2-220



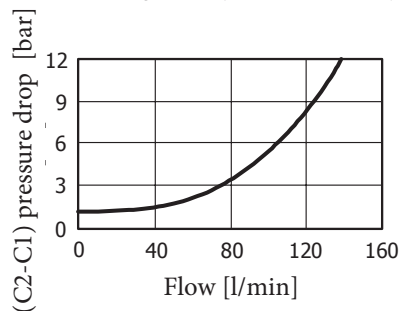
TECHNICAL DATA

RVSAC200.C.D47		
RELIEF VALVE MAXIMUM FLOW	[l/min]	200
MAXIMUM PRESSURE	[bar]	350
RELIEF VALVE SETTING RANGE	[bar]	C (70-420)
STANDARD RELIEF SETTING	[bar]	70
CHECK VALVE MAXIMUM FLOW	[l/min]	160
BLOCK MATERIAL	□	steel
DISTRIBUTOR FITTING	□	D47

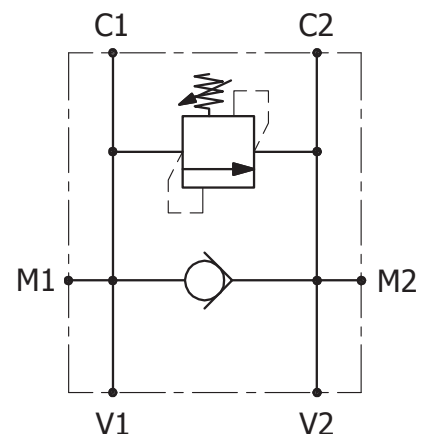
Relief cartridge typical pressure rise



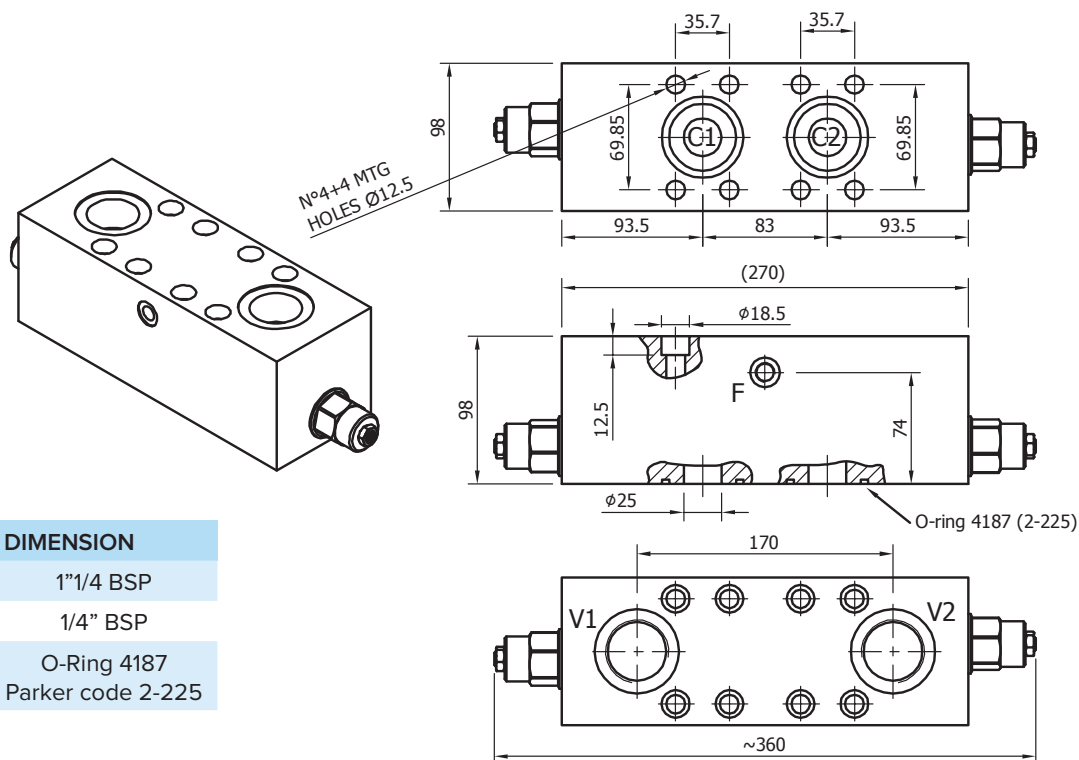
Oil supply flow (from C2 to C1)



Hydraulic circuit



DOUBLE OVERCENTER - OVDA 300



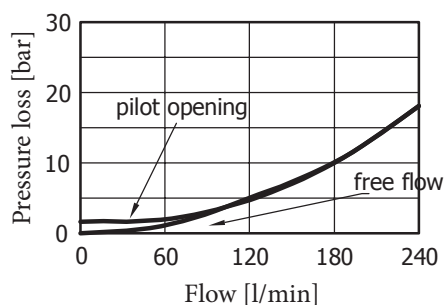
PORTS DIMENSION

V1, V2	1"1/4 BSP
F	1/4" BSP
C1, C2	O-Ring 4187 Parker code 2-225

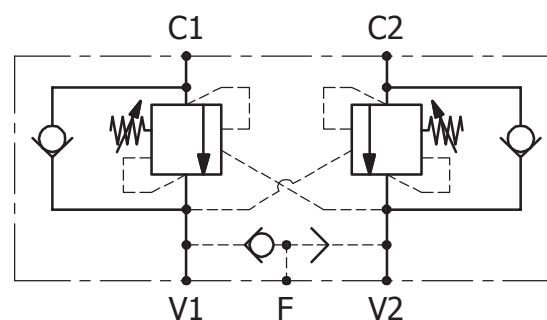
TECHNICAL DATA

		OVDA.300.1.D75	OVDA.300.4.D75	OVDA.300.2.D75
NOMINAL FLOW	[l/min]	240	240	240
MAXIMUM FLOW	[l/min]	300	300	300
MAXIMUM PRESSURE	[bar]	350	350	350
PILOT RATIO	□	1 (3:1)	4 (10:1)	2 (4.5:1)
RELIEF VALVE SETTING RANGE	[bar]	70-280	140-350	140-350
STANDARD RELIEF SETTING	[bar]	210	210	210
BLOCK MATERIAL	□	steel	steel	steel
DISTRIBUTOR FITTING	□	D75	D75	D75

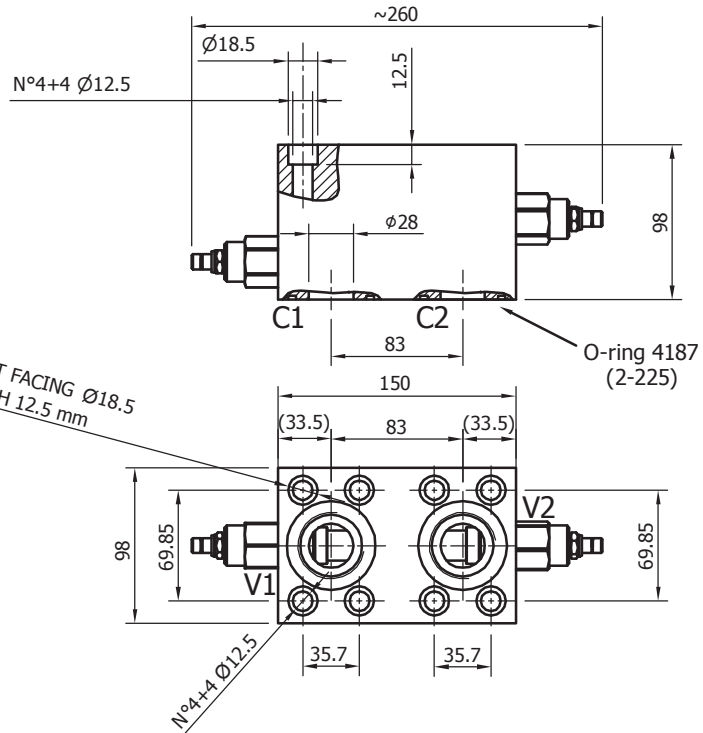
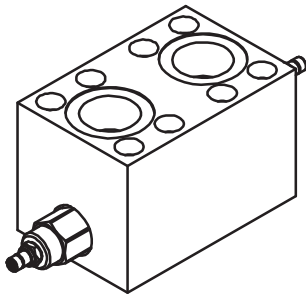
Cartridge characteristic



Hydraulic circuit



DOUBLE RELIEF - RVDA 200



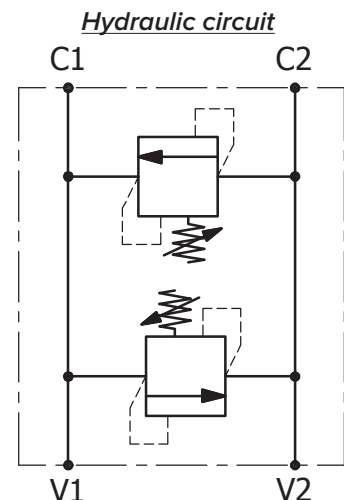
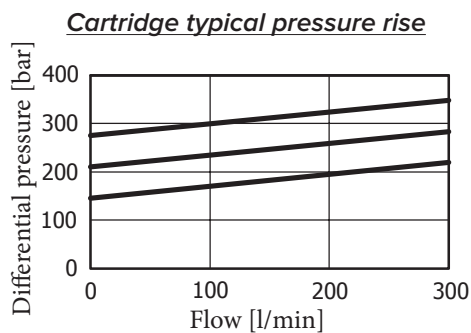
PORTS DIMENSION

V1, V2	1"1/4 BSP
C1, C2	O-Ring 4187 Parker code 2-225

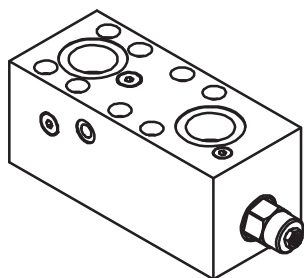
TECHNICAL DATA

RVDA.200.C.D75

RELIEF VALVE MAXIMUM FLOW	[l/min]	200
MAXIMUM PRESSURE	[bar]	350
RELIEF VALVE SETTING RANGE	[bar]	C (70-420)
STANDARD RELIEF SETTING	[bar]	70
BLOCK MATERIAL	□	steel
DISTRIBUTOR FITTING	□	D75

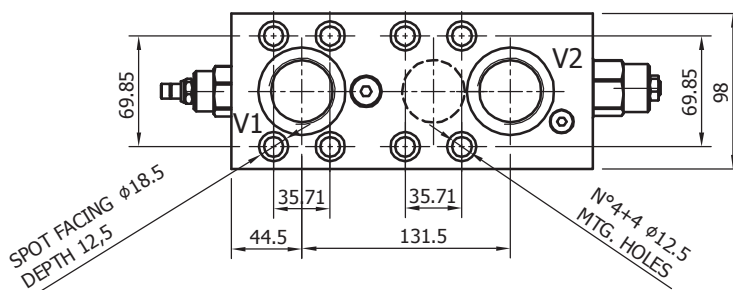
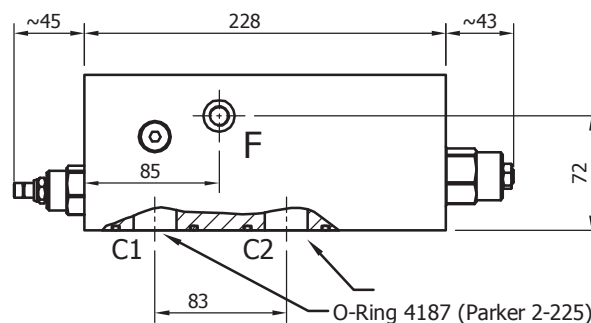


RELIEF & OVERCENTER - ORVSA 200



PORTS DIMENSION

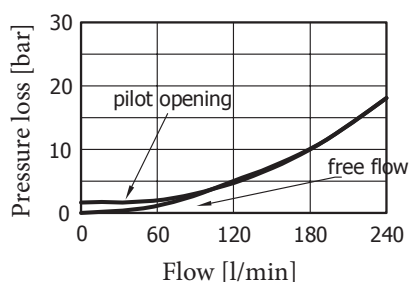
V1, V2	1"1/4 BSP
F	1/4" BSP
C1, C2	O-Ring 4187 Parker code 2-225



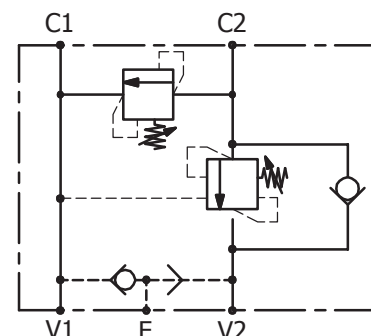
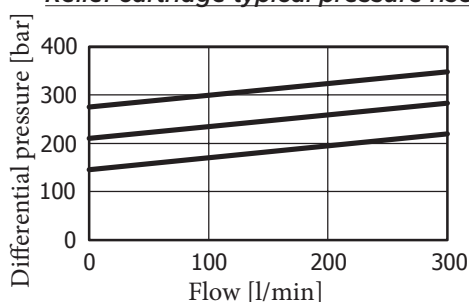
TECHNICAL DATA

		ORVSA.200.1.C.D75	ORVSA.200.4.C.D75	ORVSA.200.2.C.D75
NOMINAL FLOW	[l/min]	240	240	240
MAXIMUM FLOW	[l/min]	300	300	300
MAXIMUM PRESSURE	[bar]	350	350	350
PILOT RATIO	□	1 (3:1)	4 (10:1)	2 (4.5:1)
OVC RELIEF VALVE SETTING RANGE	[bar]	70-280	140-350	140-350
OVC STANDARD RELIEF SETTING	[bar]	210	210	210
RELIEF VALVE SETTING RANGE	[bar]	C (70-420)	C (70-420)	C (70-420)
RELIEF STANDARD SETTING	[bar]	70	70	70
BLOCK MATERIAL	□	steel	steel	steel
DISTRIBUTOR FITTING	□	D75	D75	D75

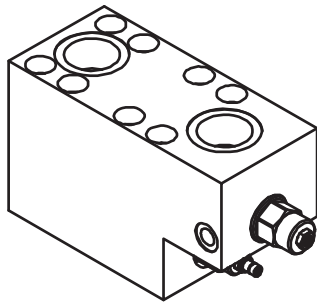
OVC cartridge characteristic



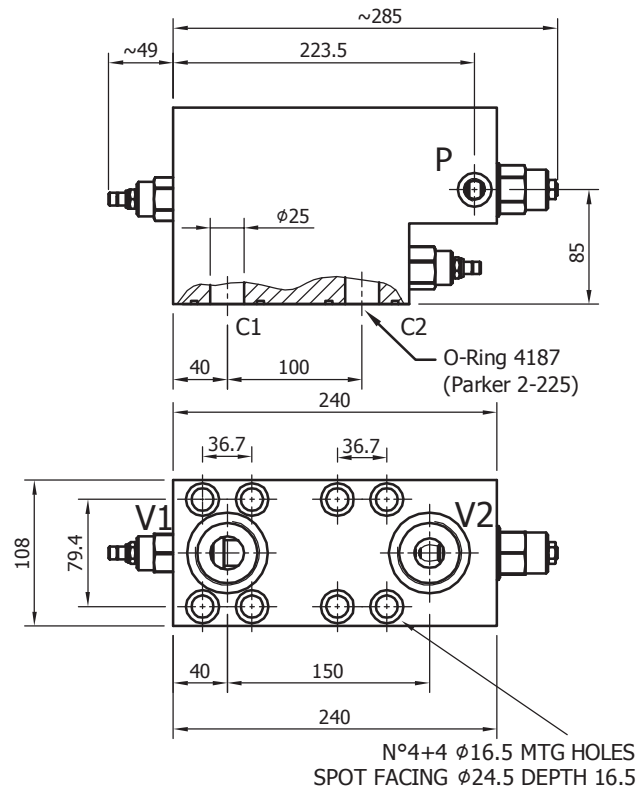
Relief cartridge typical pressure rise



RELIEF & OVERCENTER - DRVSO200EP



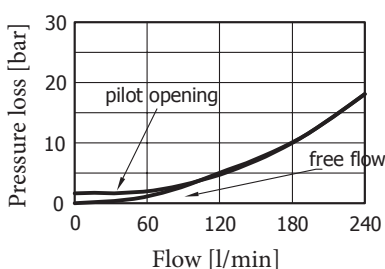
PORTS DIMENSION	
V1, V2	1"1/4 BSP
P	1/4" BSP
C1, C2	O-Ring 4137 Parker code 2-220



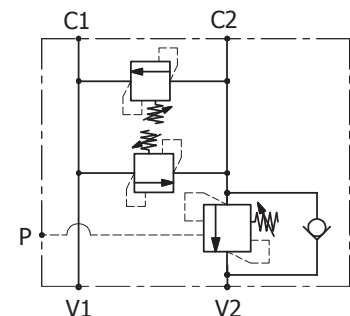
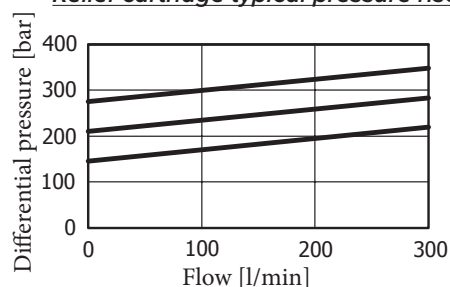
TECHNICAL DATA

		DRVSO200EP.1.C.D75	DRVSO200EP.4.C.D75	DRVSO200EP.2.C.D75
NOMINAL FLOW	[l/min]	240	240	240
MAXIMUM FLOW	[l/min]	300	300	300
MAXIMUM PRESSURE	[bar]	350	350	350
PILOT RATIO	□	1 (3:1)	4 (10:1)	2 (4.5:1)
OVC RELIEF VALVE SETTING RANGE	[bar]	70-280	140-350	140-350
OVC STANDARD RELIEF SETTING	[bar]	210	210	210
RELIEF VALVE SETTING RANGE	[bar]	C (70-420)	C (70-420)	C (70-420)
RELIEF STANDARD SETTING	[bar]	70	70	70
BLOCK MATERIAL	□	steel	steel	steel
DISTRIBUTOR FITTING	□	D75	D75	D75

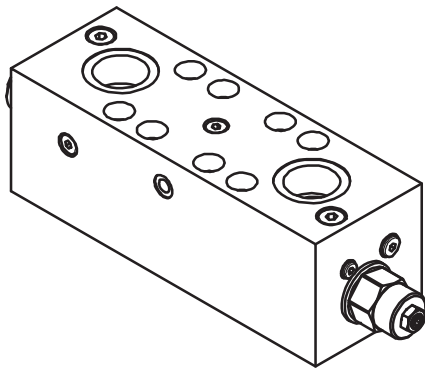
OVC cartridge characteristic



Relief cartridge typical pressure rise

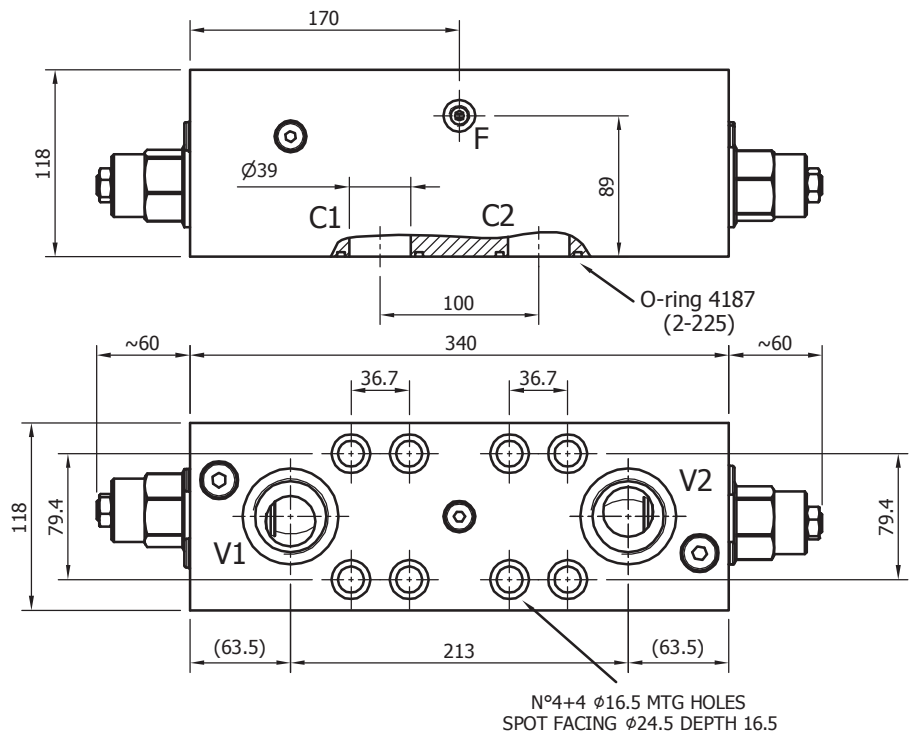


DOUBLE OVERCENTER - OVDA 480



PORTS DIMENSION

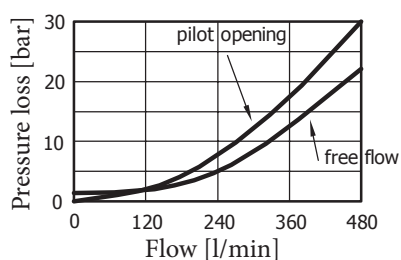
V1, V2	1"1/2 BSP
F	1/4" BSP
C1, C2	O-Ring 4187 Parker code 2-225



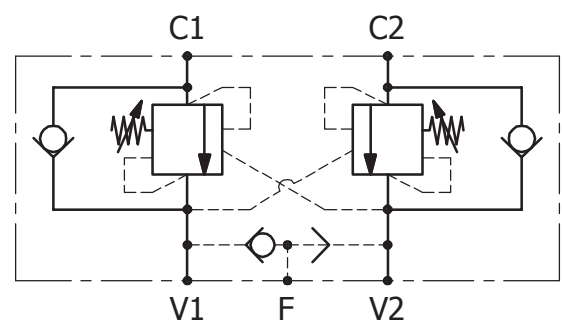
TECHNICAL DATA

		OVDA.480.1.D90	OVDA.480.4.D90	OVDA.480.2.D90
NOMINAL FLOW	[l/min]	480	480	480
MAXIMUM FLOW	[l/min]	600	600	600
MAXIMUM PRESSURE	[bar]	350	350	350
PILOT RATIO	□	1 (3:1)	4 (10:1)	2 (4.5:1)
RELIEF VALVE SETTING RANGE	[bar]	70-280	140-350	140-350
STANDARD RELIEF SETTING	[bar]	210	210	210
BLOCK MATERIAL	□	steel	steel	steel
DISTRIBUTOR FITTING	□	D90	D90	D90

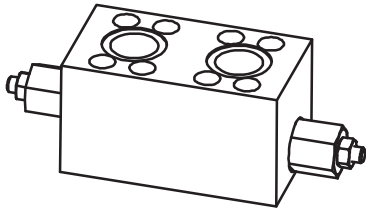
Cartridge characteristic



Hydraulic circuit

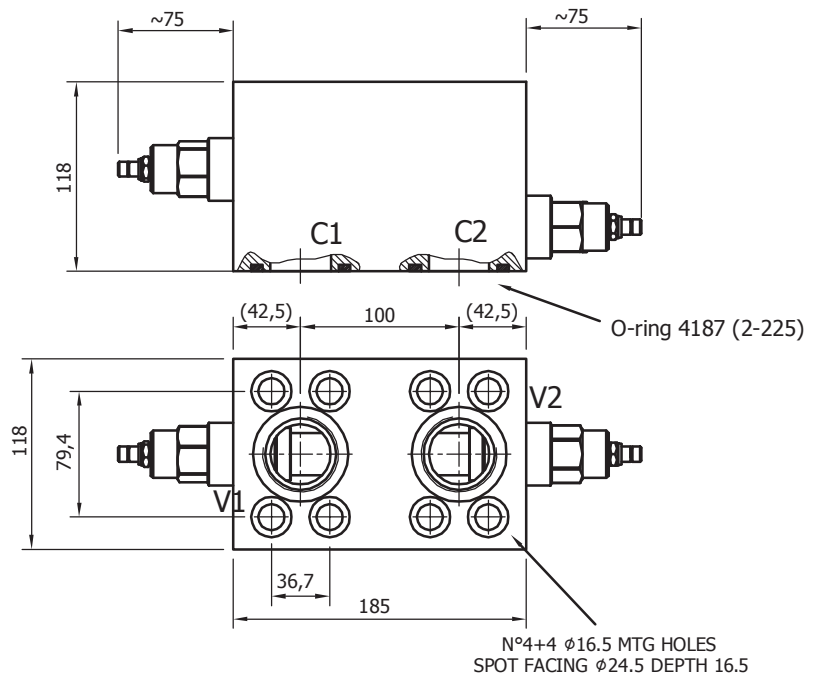


DOUBLE RELIEF - RVDA 380



PORTS DIMENSION

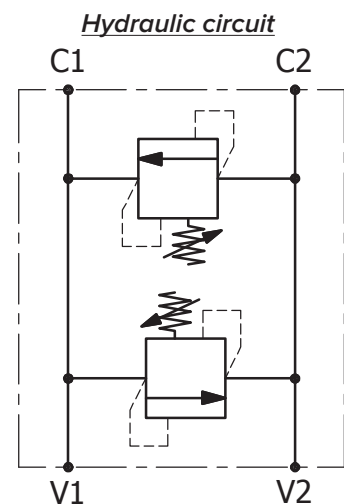
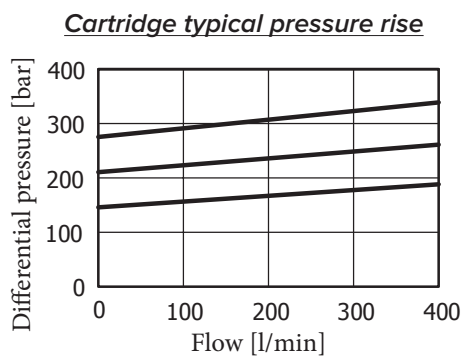
V1, V2	1"1/2 BSP
C1, C2	O-Ring 4187 Parker code 2-225



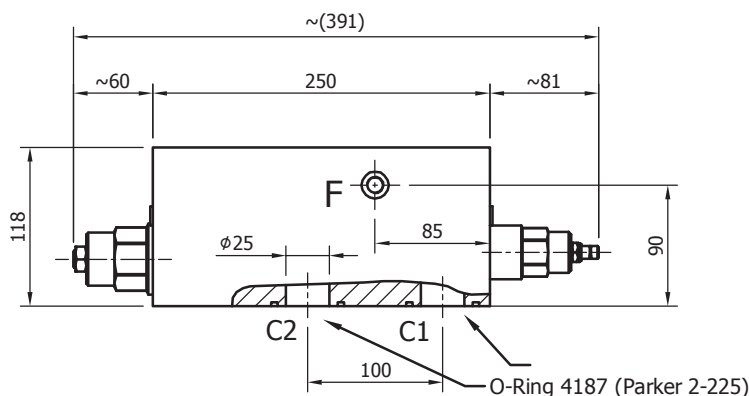
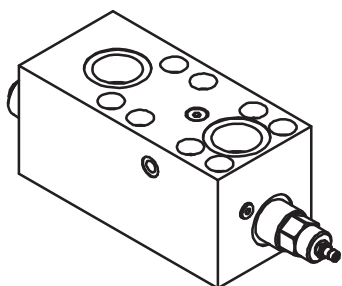
TECHNICAL DATA

RVDA.380.C.D90

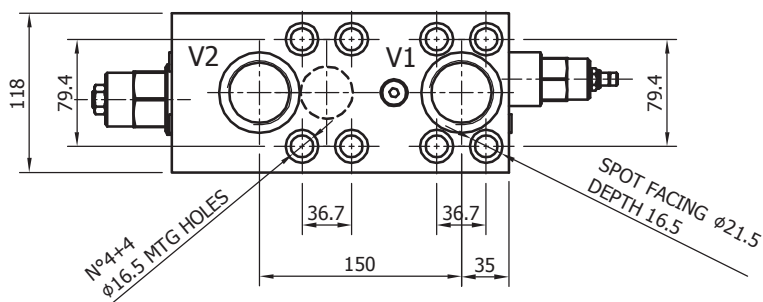
RELIEF VALVE MAXIMUM FLOW	[l/min]	380
MAXIMUM PRESSURE	[bar]	350
RELIEF VALVE SETTING RANGE	[bar]	C (70-420)
STANDARD RELIEF SETTING	[bar]	70
BLOCK MATERIAL	□	steel
DISTRIBUTOR FITTING	□	D90



RELIEF & OVERCENTER - ORVSA 480



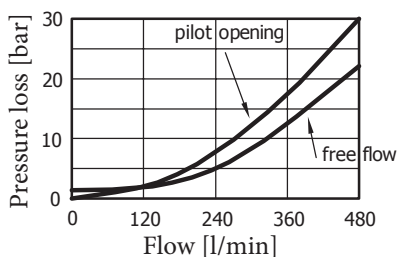
PORTS DIMENSION	
V1, V2	1"1/2 BSP
F	1/4" BSP
C1, C2	O-Ring 4187 Parker code 2-225



TECHNICAL DATA

	ORVSA.480.1.D90	ORVSA.480.4.D90	ORVSA.480.2.D90
NOMINAL FLOW [l/min]	480	480	480
MAXIMUM FLOW [l/min]	600	600	600
MAXIMUM PRESSURE [bar]	350	350	350
PILOT RATIO	1 (3:1)	4 (10:1)	2 (4.5:1)
OVC RELIEF VALVE SETTING RANGE [bar]	70-280	140-350	140-350
OVC STANDARD RELIEF SETTING [bar]	210	210	210
RELIEF VALVE SETTING RANGE [bar]	C (70-420)	C (70-420)	C (70-420)
RELIEF STANDARD SETTING [bar]	70	70	70
BLOCK MATERIAL	steel	steel	steel
DISTRIBUTOR FITTING	D90	D90	D90

OVC cartridge characteristic



Relief cartridge typical pressure rise

