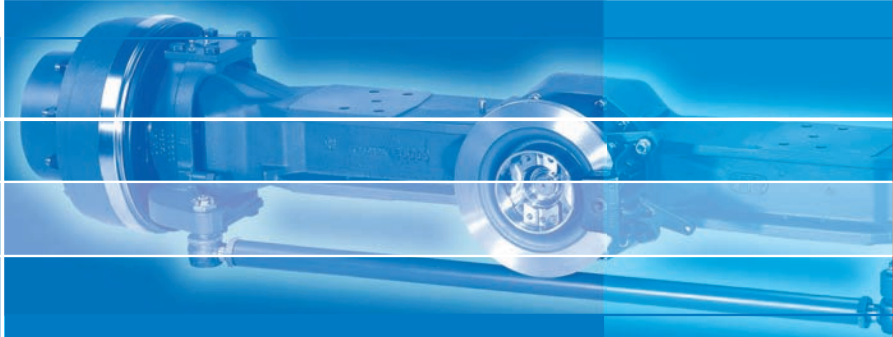




**OMSI Trasmissioni S.p.A.**

## **Axles**



**Axles, transmissions and couplers  
for self-propelled machinery**

COMPANY  
WITH QUALITY SYSTEM  
CERTIFIED BY DNV  
**=ISO 9001/2000=**



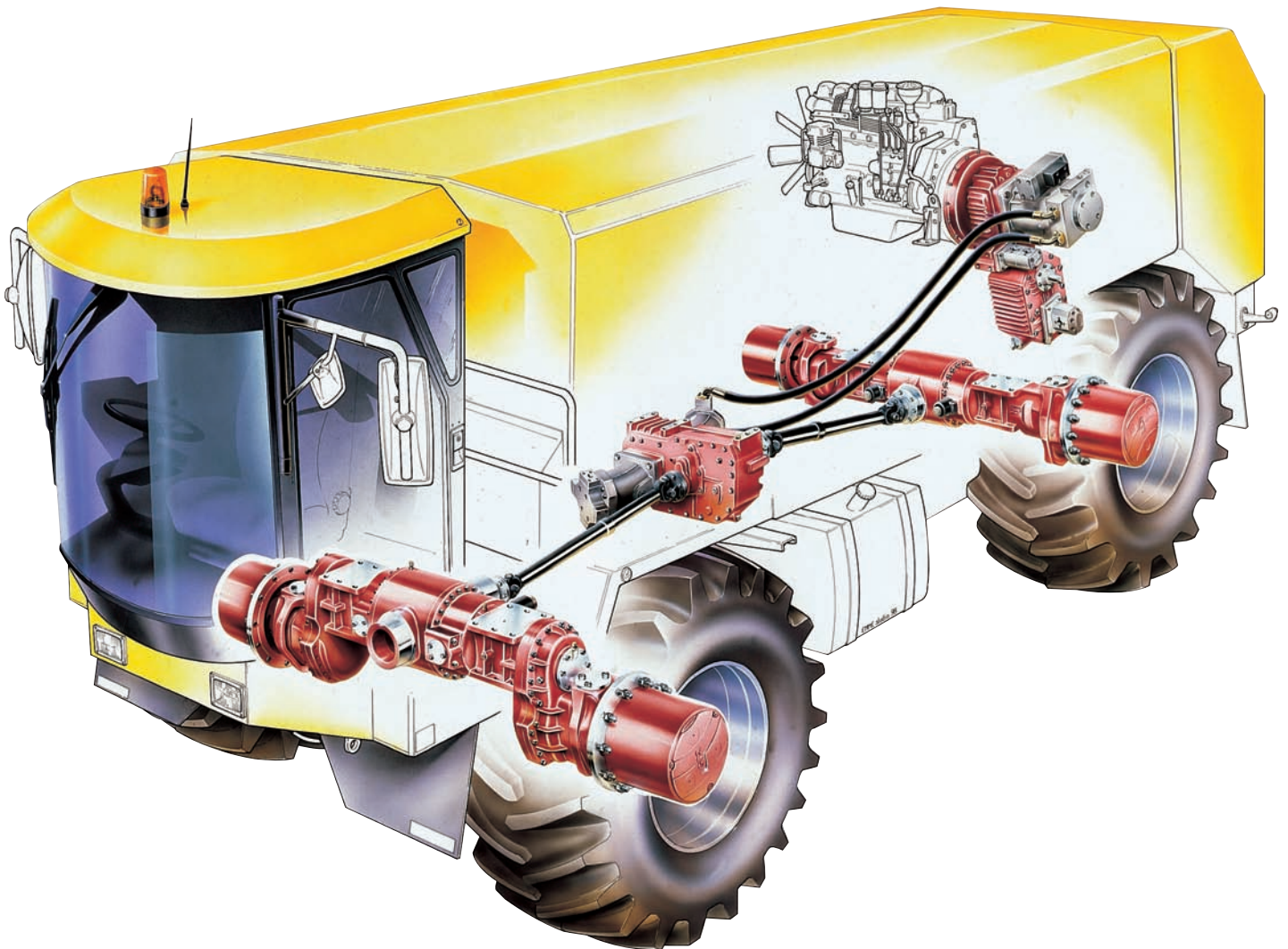
OMSI Trasmissioni S.p.A.

## Axles, transmissions and couplers for self-propelled machinery

Working closely together with the customer, OMSI Trasmissioni S.p.A. designs and manufactures complete custom drive systems for self-propelled agricultural, forestry, earth moving, construction and transport machinery.

OMSI continues to expand its extensive product line, which now includes:

- rigid drive axles: standard, variable track, portal and bogie;
- steering drive axles: standard and portal;
- reducers and transfer cases;
- transmissions;
- hydraulic pump couplers for direct flange-mounting to diesel engine.



OMSI rigid and steering drive axles are produced in a number of different configurations using standard components:

> **bevel drive with various ratios available;**

> **differential unit with various locking mechanisms:**

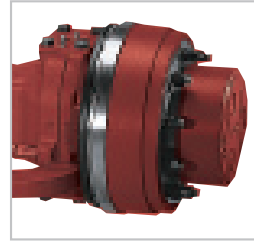
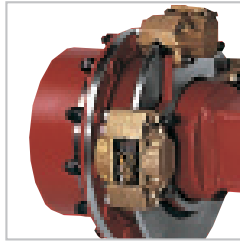
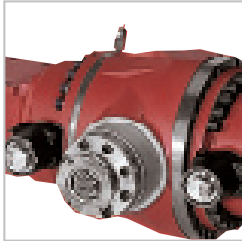
100% mechanical,  
no-spin  
limited-slip;

> **planetary reducers with various ratios available**

three four or five planetary wheels;

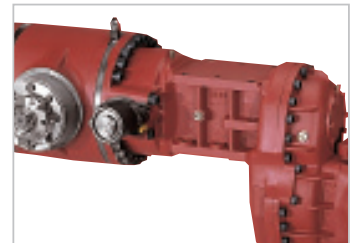
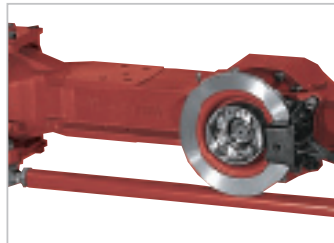
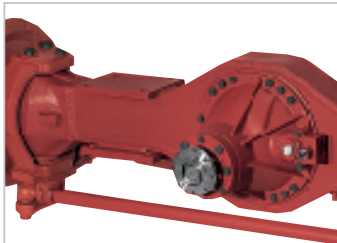
> **service and parking brakes:**

multi-plate oil bath  
disc,  
drum;



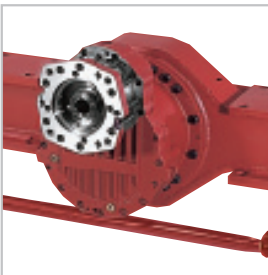
> **structure:**

steel;  
spheroidal cast iron, single;  
spheroidal cast iron, modular;



> **The following items can be flanged directly to axle drive input:**

hydraulic motors;  
reducers-transfer cases;  
transmissions.



> **Available upon request:**

complete steering systems;  
frame mounts with side brackets or central swing system;  
tracks in various width.

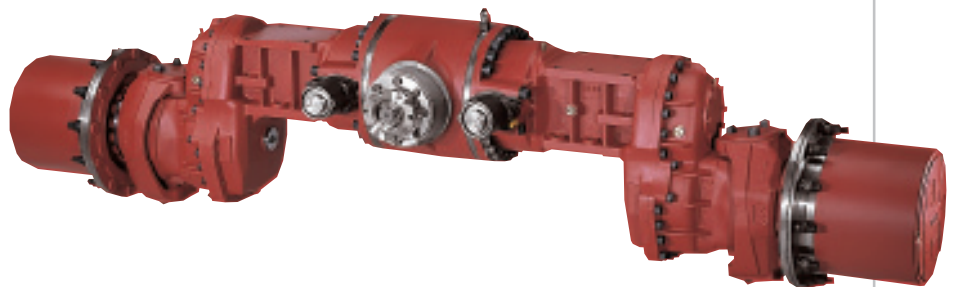
## RIGID AND STEERING DRIVE AXLES

### STEERING DRIVE AXLE WITH STEEL STRUCTURE



SUGAR BEET HARVESTERS MACHINE

### PORTAL STEERING DRIVE AXLE



SUGAR BEET HARVESTERS MACHINE

### STERING AND OSCILLATING DRIVE AXLE



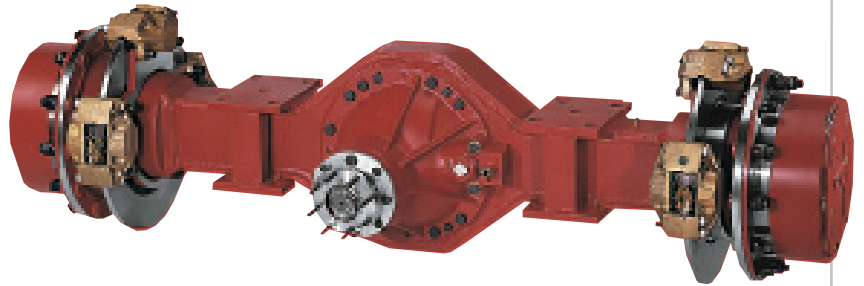
MULTI PURPOSE AGRICULTURE MACHINE

SEWAGE SPREADERS



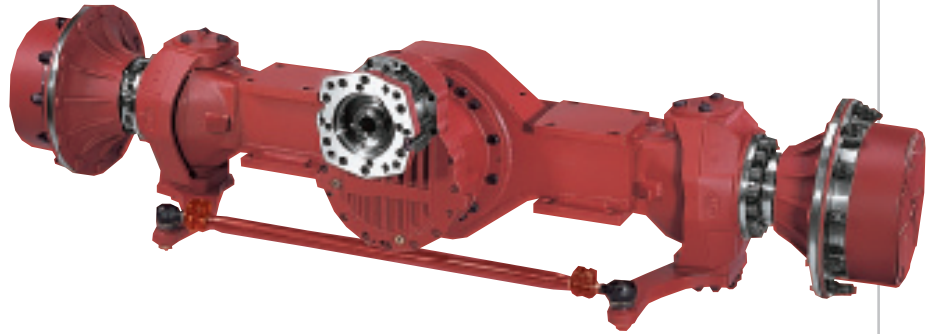
## RIGID AND STEERING DRIVE AXLES

### RIGID DRIVE AXLE WITH STEEL STRUCTURE



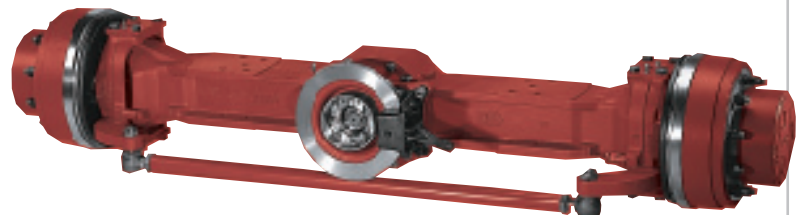
INDUSTRIAL TOWING TRACTORS

### RIGID AND STEERING DRIVE AXLE WITH INPUT REDUCER



SOIL STABILIZERS AND ASPHALT  
RECYCLING MACHINERY

### STEERING DRIVE AXLE WITH SINGLE CAST IRON STRUCTURE



OFF ROADS CRANES  
MULTI PURPOSE AGRICULTURE MACHINE

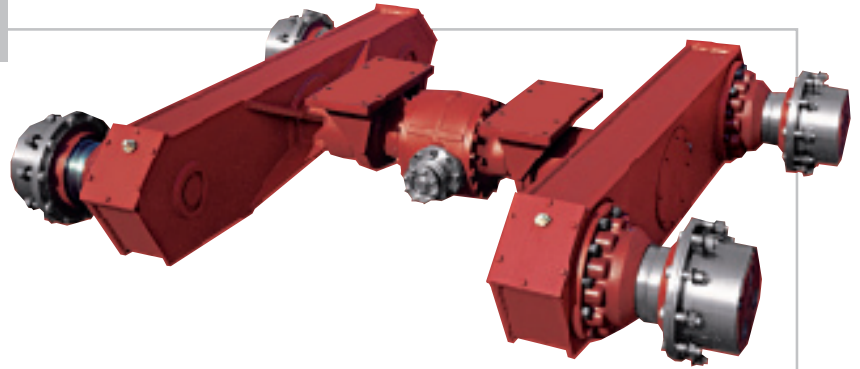
## RIGID AND STEERING DRIVE AXLES

### STEERING DRIVE AXLE WITH MODULAR CASTING STRUCTURE



STREET SWEEPER AND REFUSE COLLECTOR

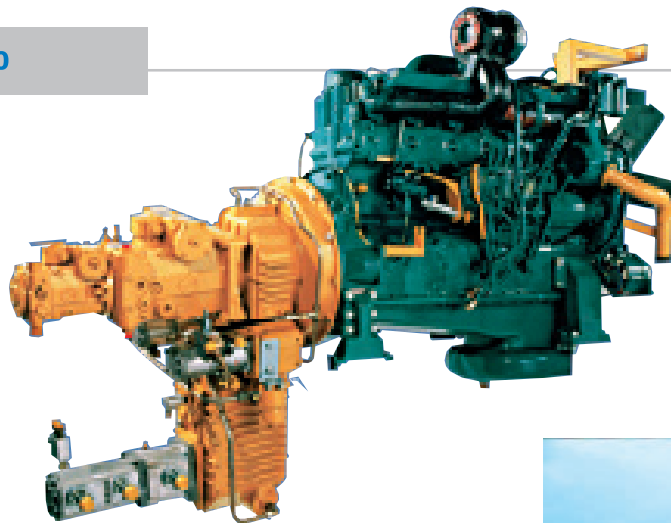
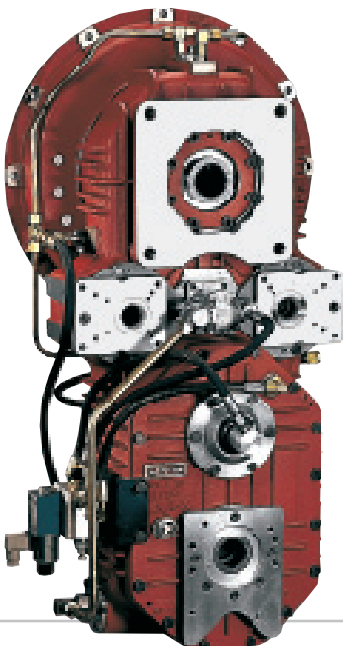
### BOOGIE AXLE



GREADER MACHINE

## HYDRAULIC PUMP COUPLERS FOR INSTALLATION ON DIESEL ENGINES

### GRPR - H GRPR - 1200



Couplers for hydraulic pumps with a supplementary power take-off engaged and disengaged by means of multiple plate oil-bath clutch with pneumatic or hydraulic actuation.



SUGAR BEET HARVESTERS MACHINE



## REDUCERS AND TRANSMISSIONS

Along with its range of rigid and steering axles, OMSI Trasmissioni S.p.A. has developed a series of reducers, transmissions and transfer cases for use with hydraulic motors or hydrodynamic drives.

### >Units can be equipped with:

- disc or drum parking brake with manual or hydraulic/pneumatic override actuation;
- drive disengagement;
- electric sensors for gear position detection

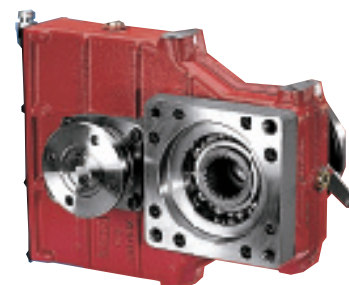
### >Available features include:

- wide range of ratios;
- pneumatic, hydraulic or manual gear shifters.

### SINGLE SPEED REDUCER - R1

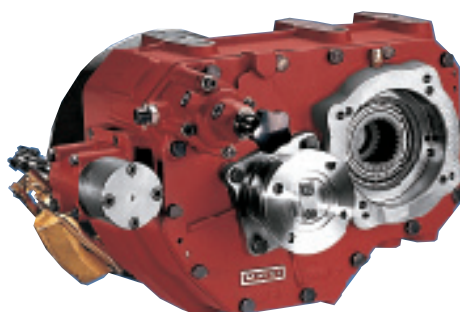


Single speed reducer with provision of mounting flanges for several types of hydraulic motor ranging from 50 to 110 cm<sup>3</sup>



### FORK LIFT TRUCKS - STACKER

### GNO2 AND GNO3



Two or three speed transmissions with mounting flanges for hydraulic motors ranging from 50 to 110 cm<sup>3</sup>.

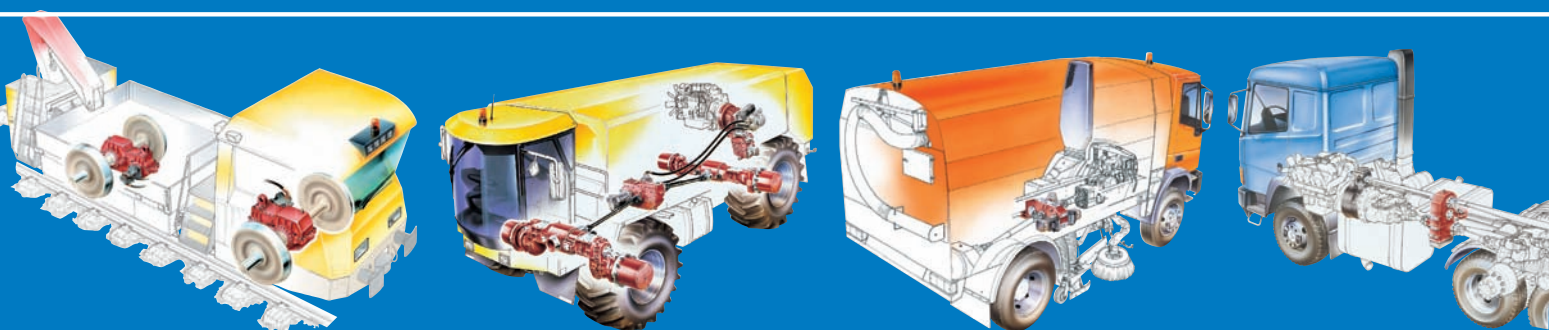
### FOREST MACHINES

### C152.2 TWO SPEED TRANSMISSION



with mounting flanges for one 105 to 250 cm<sup>3</sup> hydraulic motor or two 105 to 160 cm<sup>3</sup> hydraulic motors. Also available is the C152.4 version with four reduction ratios permitting extremely slow forward speeds.





**OMSI Trasmissioni S.p.A.**  
**Via S.Pietro, 60 - 25077**  
**Roè Volciano (Brescia) Italy**  
**Tel. +39 0365-563402**  
**Fax +39 0365-63743**  
**www.omsitrasmissioni.com**

**OMSI Transmissions, Inc.**  
**9319-A Ravenna Road**  
**Twinsburg, Ohio 44087 USA**  
**Ph. +1 330-405-7350**  
**Fax +1 330-405-7351**  
**E-mail: omsi@alltel.net**

**OMSI Trasmissioni S.p.A.**  
**Bureau France**  
**Technoparc de l'Aubinière 2,**  
**avenue des Améthystes BP 13813**  
**44338 Nantes Cedex 03 France**  
**tel. +33 2-72681024**  
**fax +33 2-72681025**  
**lebailjc@omsitrasmissioni.com**

**OMSI 奥姆西传动技术**  
**Via 293, Xiuyan rd, Kangqiao**  
**ind.zone 201315 Pudong**  
**Shanghai China**