

## MONOBLOCK WITH MULTIPLE SECTIONS ISO 05

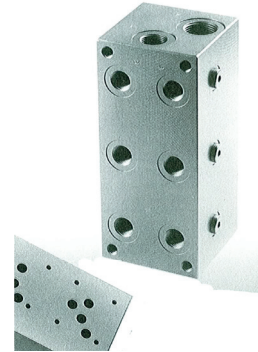
### MRK-5-\*G

120 l/min (300 bar)

#### 1 DESCRIPTION

- Ports A and B (1/2" BSP) on the back
- P (3/4" BSP) and T (1" BSP) lines with ports on the two rear sides
- Parallel connections P and T

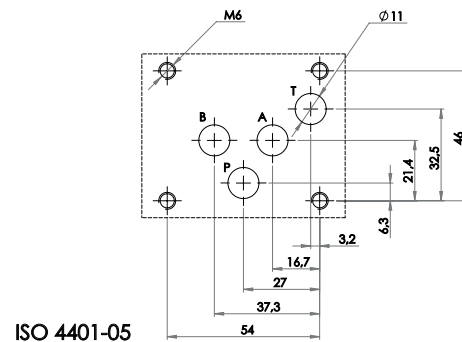
Monoblocks with multiple sections from 2 to 8, for hydraulic 4 ways operated valves ISO 05 with parallel internal connections P and T. Ports A and B are positioned, in pairs, on the back side of the block with respect to the valve assembly face.



#### 2 ORDERING CODE

(1)	(2)	(3)	(4)
MRK	-	5	-
			G

Type	Number of stations 03	Q max recommended (*) l/min
MRK-5-2 G	2	120
MRK-5-3 G	3	100
MRK-5-4 G	4	100
MRK-5-5 G	5	100
MRK-5-6 G	6	100
MRK-5-7 G	7	80
MRK-5-8 G	8	80



Type	X (mm)	Z (mm)	mass (kg)
MR-5-2 G	160	136	11,30
MR-5-3 G	240	216	17,00
MR-5-4 G	320	296	22,70
MR-5-5 G	400	376	28,5
MR-5-6 G	480	456	34,00
MR-5-7 G	560	536	39,90
MR-5-8 G	640	616	45,60

### 3 TECHNICAL DATA

Material	Cast Iron GG 25
Coating:	Manganese phosphating
Pressure allowed in the ports	P, A, B and T = 300 bar
Incoming flow, maximum recommended	From 80 to 120 l/min, decreasing with the rise of the number of sections.
Connecting ports	Standard female cylindrical BSP threads with maximum rugosity of a surface Ra 1,6 for the fitting of connections. A and B ports 1/2" BSP - one pair per section. P 3/4" BSP and T 1" BSP - one pair on each rear side of a monoblock; it allows, if needed, to double supply (P) or double outlet (T); close the unused ports. (* ) If both pairs of ports P and T are used, maximum recommended Q values can be increased.
Installation:	4 mounting holes threaded M 12 on the rear side
Mounting surface of the valve	
Planarity of the surface	0,01/100
Rugosity:	Ra 0,8
Auxiliary ports:	On the side of monoblock there are auxiliary ports threaded 1/4" BSP, connected to the line A (one per each section). Monoblocks are sold with these ports closed by plugs with cylindric thread, with hexagon socket for 6 mm key.

### 4 INSTALLATION DIMENSION

