

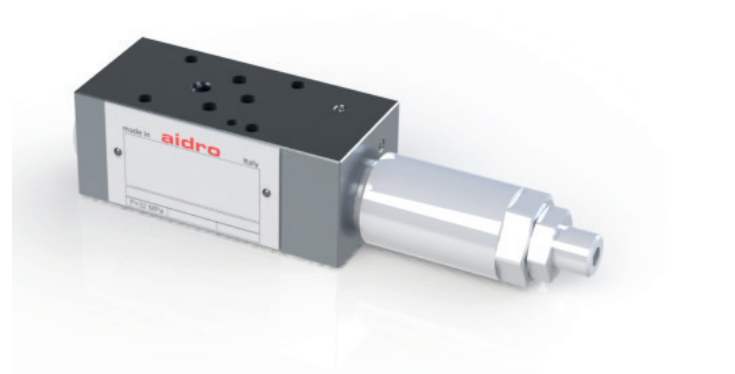
DIRECT ACTING, PRESSURE REDUCING VALVES ON B LINE

AM3-RO-BC/6,3

60 l/min - 32 MPa (320 bar)

1 DESCRIPTION

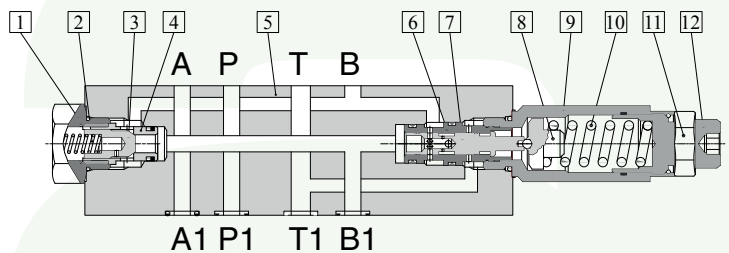
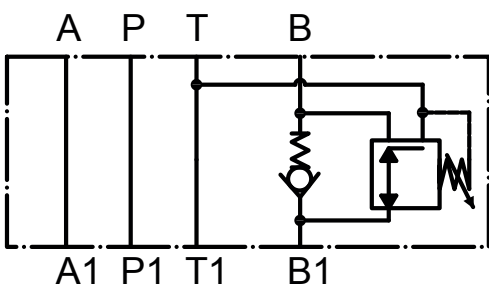
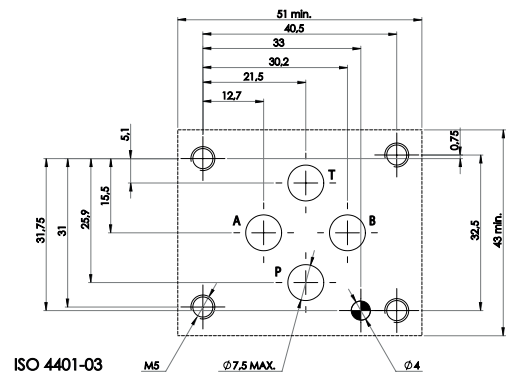
Stackable pressure reducing valve direct operated. The valve is made with a steel body combined with a pressure relief cartridge valve and with a check valve. The body of the valve is in aluminium. The cartridge valve is zinc coated. The pressure can be set in different pressure ranges.

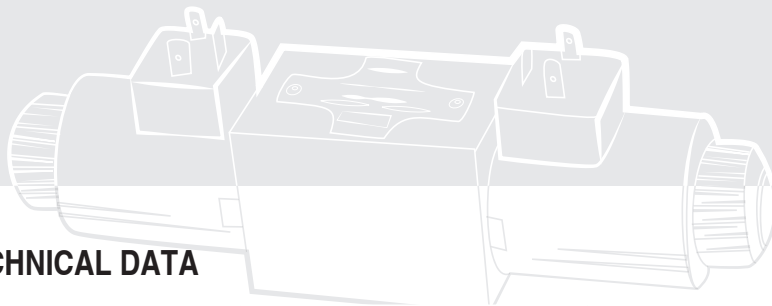


2 ORDERING CODE

(1)	(2)	(3)	(4)
AM3	- RO	- BC	/ 6,3

- (1) AM3: stackable valve CETOP 03
- (2) RO: pressure reducing, direct operated- 3 way valve
- (3) BC: line where the control operates: B with check valve
- (4) 6,3: controlled pressure adjustment ranges (up to 6,3 MPa)

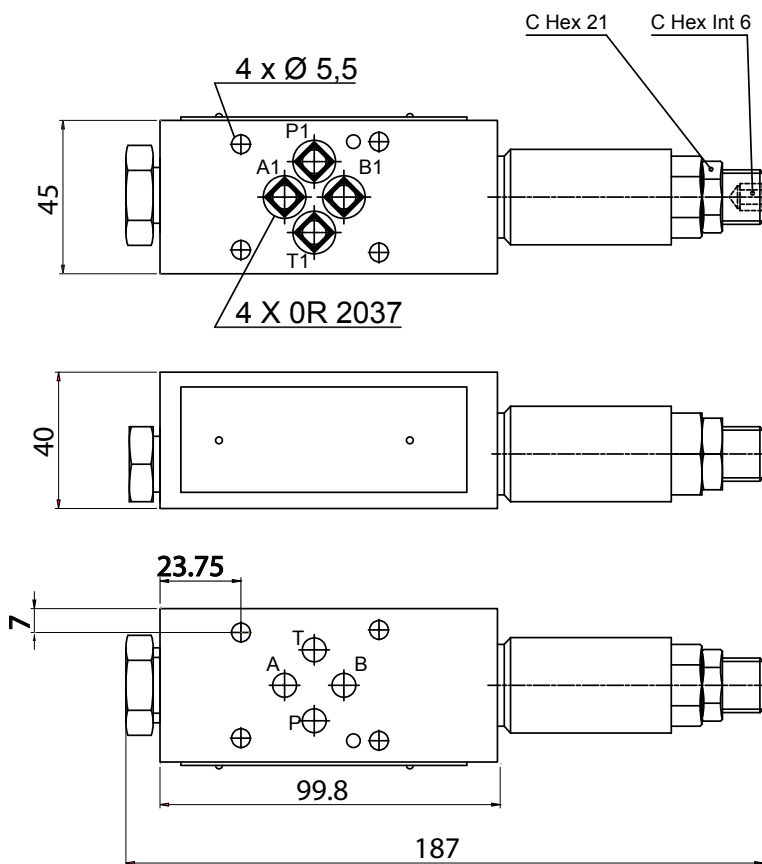




3 TECHNICAL DATA

Maximum nominal pressure	32 MPa (320 bar)	Adjustment of the regulated pressure: The pressure in B1 line can be set by acting on the adjustment element 12 (screw with internal hexagon 6 mm), after having unlocked its retaining nut 11. Turn clockwise to increase pressure at B1 port.
Maximum pressure on B line	15 MPa (150 bar)	
Maximum rec. flow on B line	20 l/min	
Maximum rec. flow on free lines	60 l/min	
Regulated pressure on B1 line	up to 6,3 MPa (63 bar)	

4 INSTALLATION DIMENSIONS (mm)



5 HYDRAULIC FLUIDS

Seals and materials used on standard valve AM3* are fully compatible with hydraulic fluids of mineral oil base, upgraded with antifoaming and antioxidantizing agents. The hydraulic fluid must be kept clean and filtered to ISO 4406 class 19/17/14, or better, and used in a recommended viscosity range from 10 cSt to 60 cSt.

All stackable valves AM3- * conform with ISO and CETOP specifications for mounting surface dimensions. Leakage between valve and mounting surface is prevented by the positive compression on their seats of 4 seals of OR type.