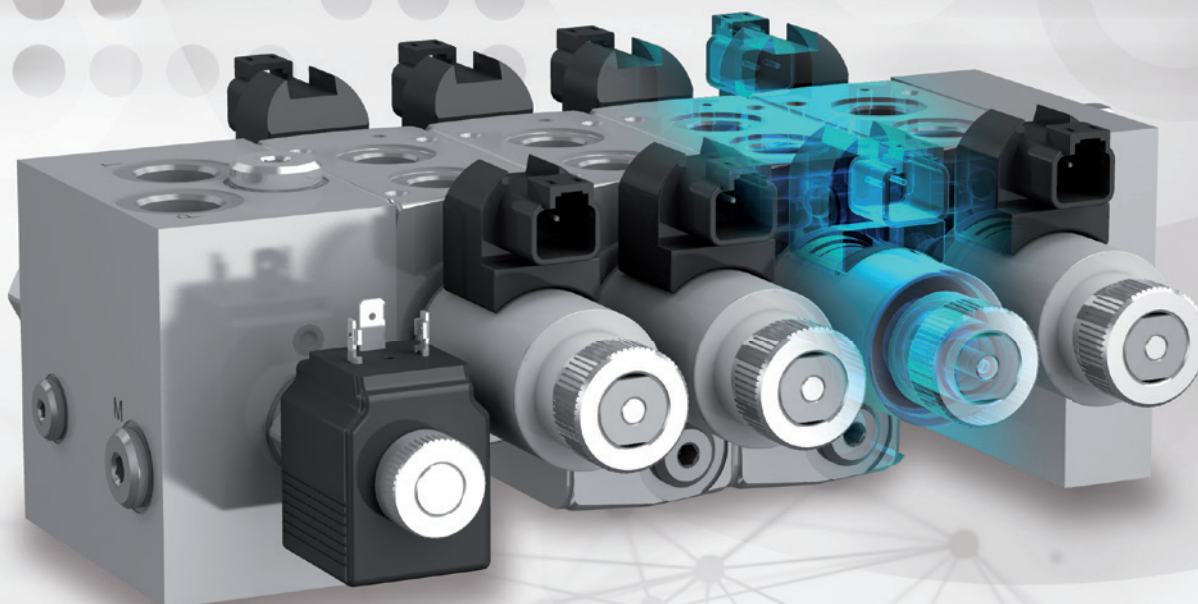


# NEW

## SDX060

Bankable Directional Valve  
Proportional Control



**New Bankable Valve:  
Focus on  
Electric Control**

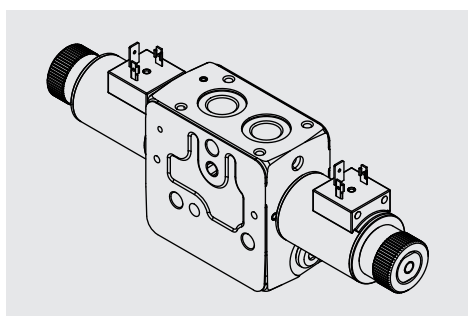


A member of



# SDX060

Bankable Directional Valve  
Proportional Control



- ☐ **Proportional control**
- ☐ **High performance**
- ☐ **Flow up to 45 l/min per section**
- ☐ **Reduced overall dimension**

## SDX060 new bankable valve: focus on electric control

Walvoil launches a new product that completes the wide range of SDE030 and SDE060 bankables valves.

The new SDX060 has been developed to offer to the market a compact solution with high control performance following the modern needs for high value power density.

The drive line of the product lay out is the mobile market. The accuracy in the control is ensured by Walvoil's components of common use largely tested.

The SDX060 is suitable for Aerial Platforms, Truck mounted Cranes, Attachments, Municipal Vehicles, and all Mobile applications up to 45 l/min.

With pre-compensated working sections and Ls pumps combination, the SDX060 is a perfect completion of Walvoil's range.

## WORKING CONDITIONS

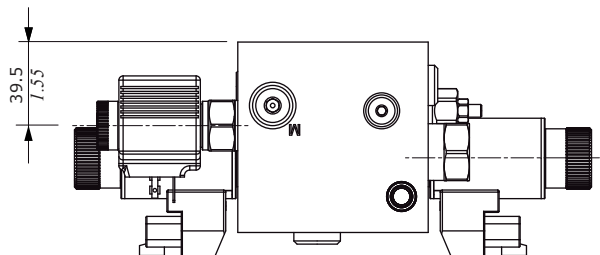
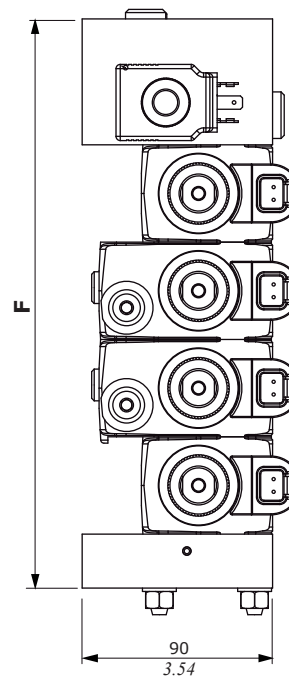
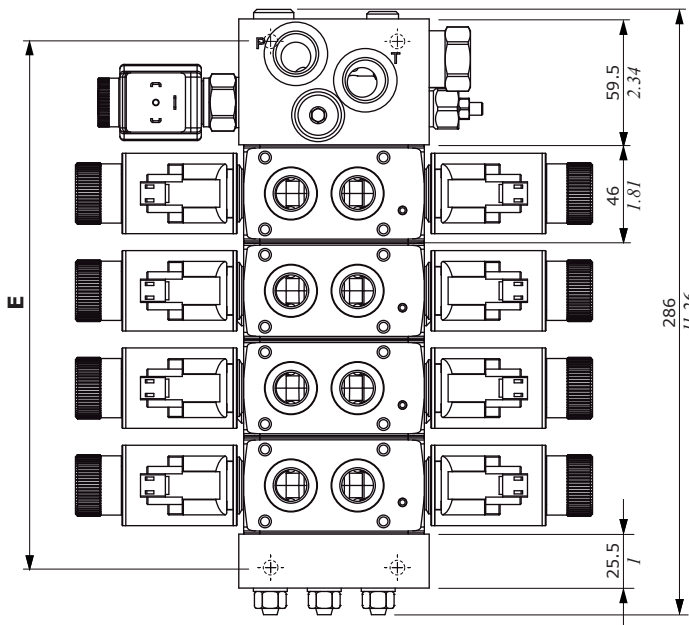
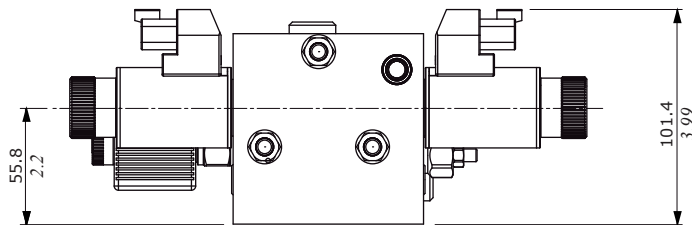
Nominal flow rating on inlet ports	on inlet port	100 l/min	26 US gpm
Nominal flow on working ports	pre-compensated working section	35 l/min @ 9 bar	9 US gpm @ 130 psi
	non pre-compensated working section	45 l/min @ 14 bar	11 US gpm @ 200 psi
Max. pressure		300 bar	4350 psi
Back pressure (max.) on outlet T port		30 bar	435 psi
Internal leakage (max.) A(B)⇒T	$\Delta p = 100 \text{ bar} - 1450 \text{ psi}$ fluid and valve at 40°C - 104°F	14 cm³/min	0.85 in³/min
Fluid		Mineral based oil	
Fluid temperature range	with NBR (BUNA-N) seals	from -20°C to 80°C	from -4°F to 176°F
	with FPM (VITON) seals	from -20°C to 100°C	from 4°F to 212°F
Viscosity	operating range	from 15 to 75 mm²/s	from 15 to 75 cSt
	min.	12 mm²/s	12 cSt
	max.	400 mm²/s	400 cSt
Max. contamination level		-/19/16 - ISO 4406	NAS 1638 - class 10
Ambient temperature for working conditions		from -20°C to 50°C	from -4°F to 122°F

NOTE - For different conditions please contact Sales Dpt.

# NEW

## Dimensional data

TYPE	E		F	
	mm	in	mm	in
SDX060/1	111	4.37	131	5.16
SDX060/2	157	6.18	177	6.97
SDX060/3	203	7.99	223	8.78
SDX060/4	249	9.8	269	10.59
SDX060/5	295	11.61	315	12.4
SDX060/6	341	13.42	361	14.21
SDX060/7	387	15.24	407	16.02
SDX060/8	433	17.04	453	17.83



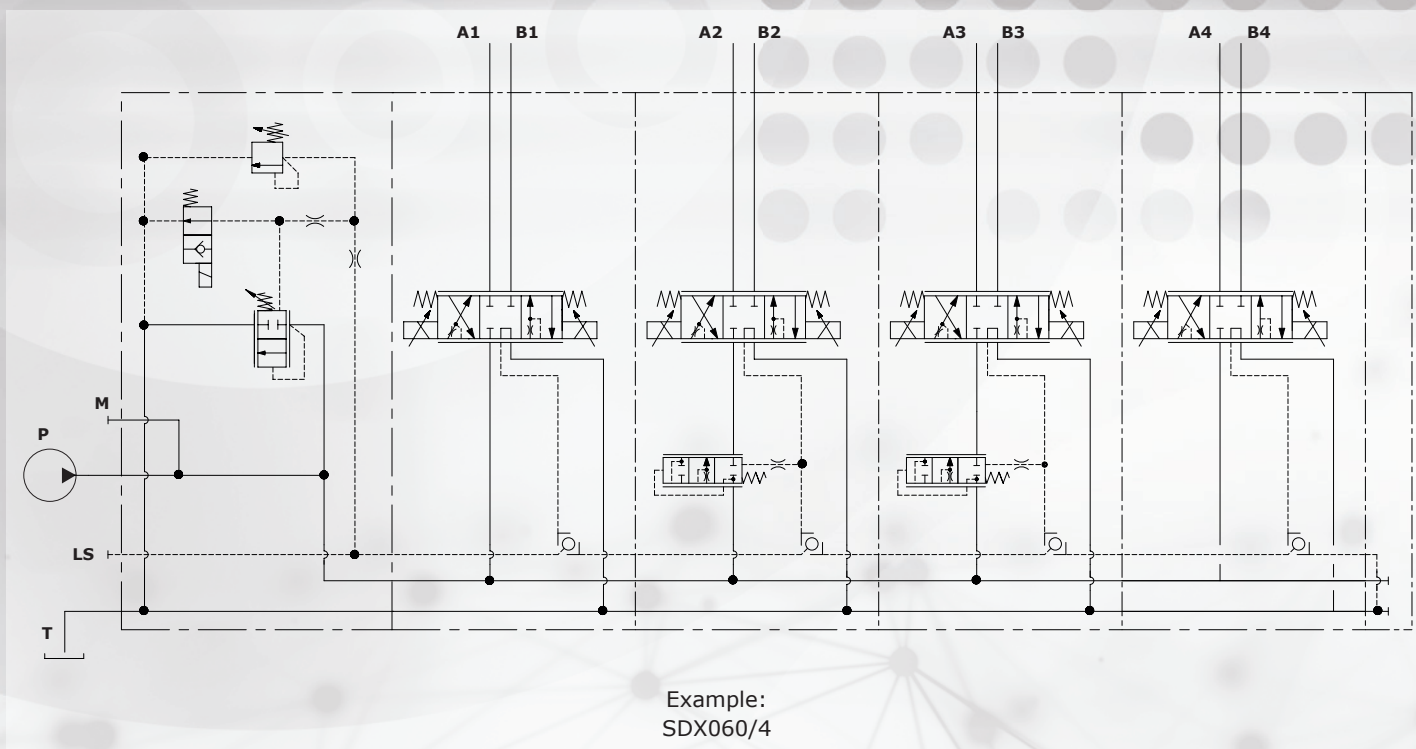
PORT THREADING		
MAIN PORTS	BSP	UN-UNF
P inlet	G 1/2	3/4-16 (SAE 8)
A and B ports	G 3/8	9/16-18 (SAE 6)
T outlet	G 1/2	3/4-16 (SAE 8)



# SDX060

Bankable Directional Valve  
Proportional Control

## Hydraulic circuit



**walvoil**  
FLUID POWER E| MOTION

**walvoil**

**hydro  
control**

**Galtech**  
S.p.A.



D1WWCB05E - 1<sup>st</sup> edition April 2019

Walvoil S.P.A. • 42124 Reggio Emilia • Italy • Via Adige, 13/D • Tel. +39.0522.932411 • Fax +39.0522.300984  
[www.walvoil.com](http://www.walvoil.com)